

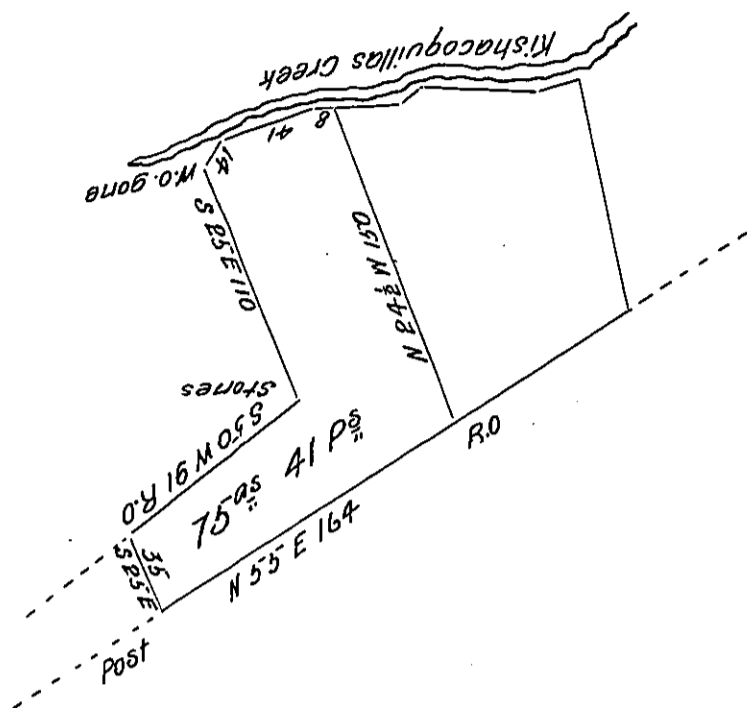
FORM NO. 1.

Down Creek from Post

S 85 W 8 Post

S 70 W 41 Post

S 30 W 14 W.O



A draught of 75<sup>as</sup> 41 P<sup>as</sup> and the allowance. Situate in Armagh Township Mifflin County being part of two tracts. One Surveyed 27<sup>th</sup> September 1797 on Warrant to Robert Mitchell & John Whorry bearing date 20<sup>th</sup> of June 1797 the other Surveyed to William Galloway the 22<sup>nd</sup> of December 1773 on Warrant bearing date 23<sup>rd</sup> September 1773. Resurveyed 1<sup>st</sup> June <sup>1834</sup> and the above laid off for Mrs Sterrett at the request of her and And<sup>rs</sup> M<sup>r</sup> Farland both present.

David Hough D.S.

IN TESTIMONY that the above is a copy of the original remaining on file in the Department of Internal Affairs of Pennsylvania, made conformably to an Act of Assembly approved the 16th day of February, 1833, I have hereunto set my Hand and caused the Seal of said Department to be affixed at Harrisburg, this twenty ninth day of January 1906.

*Loac S. Brown*  
Secretary of Internal Affairs.